










**Worklist: 2043**

<u>LAB CASE</u>	<u>ITEM</u>	<u>TASK ID</u>	<u>DESCRIPTION</u>	
P2017-2273	1	100874	AM 14 Blood Cannabinoids by	
P2017-2286	1	100875	AM 14 Blood Cannabinoids by	
P2017-2307	1	100879	AM 14 Blood Cannabinoids by	
P2017-2318	1	100880	AM 14 Blood Cannabinoids by	
P2017-2333	1	100881	AM 14 Blood Cannabinoids by	
P2017-2334	1	100882	AM 14 Blood Cannabinoids by	
P2017-2384	1	100883	AM 14 Blood Cannabinoids by	
P2017-2394	1	100884	AM 14 Blood Cannabinoids by	
P2017-2460	1	100886	AM 14 Blood Cannabinoids by	

TS

# Worklist Report

Worklist Path:	C:\MassHunter\ISP Methods\worklists\TS Combined 112217.wkl
Date Modified:	11/22/2017 12:29:08 PM
Date Printed:	11/22/2017 12:29:22 PM

## Worklist Run Parameters

Operator Name:	62340
Run Type:	Standard Start
Part of Method to Run:	Acquisition Only
Execution for Acquisition-DA:	Synchronous
Acquisition Method Path:	C:\MassHunter\ISP Methods\Acquisition
DA Method Path:	D:\MassHunter\methods
Data File Path:	C:\MassHunter\Data\2017\Combined\112217 TS
Pre-Worklist Script:	---
Post-Worklist Script:	SCP_InstrumentStandby(){MH_Acq_Scripts.exe}
Acquisition Clean Up Script:	---
Overlapped Injection:	No
Clear sample selection after run:	Yes
Wait Time for Ready(Min):	10
Threshold Disk Value(GB):	10
Comment:	---

## Plate Barcode Information

Plate	Barcode
P1	
P2	

## Worklist Table

Position of samples verified. TS

Sample Position	Sample Name	Method	Data File	Sample Type	Level Name	Comment	Info.
P1-A1	Blank	Benzos_Z_Drugs_ACN_FA_ISP_2017.m	BZ-Blank.d	Blank		AM 6.1.1 Benzo and Z by LCQQQ	Blood
P1-A1	Blank	Benzos_Z_Drugs_ACN_FA_ISP_2017.m	BZ-Blank1-r001.d	Blank		AM 6.1.1 Benzo and Z by LCQQQ	Blood
P1-A1	Blank	Benzos_Z_Drugs_ACN_FA_ISP_2017.m	BZ-Blank2-r001.d	Blank		AM 6.1.1 Benzo and Z by LCQQQ	Blood
P1-A2	10 ngmL	Benzos_Z_Drugs_ACN_FA_ISP_2017.m	BZ-10 ngmL-r001.d	Calibration	2	AM 6.1.1 Benzo and Z by LCQQQ	
P1-A3	25 ngmL	Benzos_Z_Drugs_ACN_FA_ISP_2017.m	BZ-25 ngmL_r001.d	Calibration	3	AM 6.1.1 Benzo and Z by LCQQQ	
P1-A4	50 ngmL	Benzos_Z_Drugs_ACN_FA_ISP_2017.m	BZ-50 ngmL_r001.d	Calibration	4	AM 6.1.1 Benzo and Z by LCQQQ	
P1-A5	100 ngmL	Benzos_Z_Drugs_ACN_FA_ISP_2017.m	BZ-100 ngmL_r001.d	Calibration	5	AM 6.1.1 Benzo and Z by LCQQQ	

Sample Position	Sample Name	Method	Data File	Sample Type	Level Name	Comment	Info.
P1-A6	500 ngmL	Benzos_Z_Drugs_ACN_FA_ISP_2017.m	BZ-500 ngmL_r001.d	Calibration	6	AM 6.1.1 Benzo and Z by LCQQQ	
P1-A7	1000 ngmL	Benzos_Z_Drugs_ACN_FA_ISP_2017.m	BZ-1000 ngmL_r001.d	Calibration	7	AM 6.1.1 Benzo and Z by LCQQQ	
P1-A1	Blank	Benzos_Z_Drugs_ACN_FA_ISP_2017.m	BZ-Carryover blank1_r001.d	Blank		AM 6.1.1 Benzo and Z by LCQQQ	
P1-A8	Negative Blood Control	Benzos_Z_Drugs_ACN_FA_ISP_2017.m	BZ-NC-B_r001.d	Sample		AM 6.1.1 Benzo and Z by LCQQQ	UTAK Negative Whole Blood LOT B1013
P1-A9	Positive Blood Control	Benzos_Z_Drugs_ACN_FA_ISP_2017.m	BZ-PC-B_r001.d	Sample		AM 6.1.1 Benzo and Z by LCQQQ	Benzodiazepines Mix Cerilliant lot FE012413-02 in UTAK LOT B1013
P1-A1	Blank	Benzos_Z_Drugs_ACN_FA_ISP_2017.m	BZ-Carryover blank.d	Blank		AM 6.1.1 Benzo and Z by LCQQQ	
P1-B1	P2017-2394-1	Benzos_Z_Drugs_ACN_FA_ISP_2017.m	P2017-2394-1.d	Sample		AM 6.1.1 Benzo and Z by LCQQQ	Blood
P1-B2	P2017-2478-1	Benzos_Z_Drugs_ACN_FA_ISP_2017.m	P2017-2478-1.d	Sample		AM 6.1.1 Benzo and Z by LCQQQ	
P1-A1	Blank	Benzos_Z_Drugs_ACN_FA_ISP_2017.m	BZ-end of run blank.d	Blank		AM 6.1.2 Cannabinoids by LCQQQ	
P1-D1	Blank	isp blood cannabinoids Poky 2016-3.m	MJ-Blank1-r001.d	Blank		AM 6.1.2 Cannabinoids by LCQQQ	
P1-D1	Blank	isp blood cannabinoids Poky 2016-3.m	MJ-Blank2-r001.d	Blank		AM 6.1.2 Cannabinoids by LCQQQ	
P1-D2	Blood: 1_5 ngmL	isp blood cannabinoids Poky 2016-3.m	MJ-CAL1-r001.d	Calibration	1	AM 6.1.2 Cannabinoids by LCQQQ	c-THC @5ng/mL, all others @1 ng/mL
P1-D3	Blood: 2_10 ngmL	isp blood cannabinoids Poky 2016-3.m	MJ-CAL2_r001.d	Calibration	2	AM 6.1.2 Cannabinoids by LCQQQ	c-THC @10ng/mL, all others @2 ng/mL
P1-D4	Blood: 5_25 ngmL	isp blood cannabinoids Poky 2016-3.m	MJ-CAL3_r001.d	Calibration	3	AM 6.1.2 Cannabinoids by LCQQQ	c-THC @25ng/mL, all others @5 ng/mL
P1-D5	Blood: 10_50 ngmL	isp blood cannabinoids Poky 2016-3.m	MJ-CAL4_r001.d	Calibration	4	AM 6.1.2 Cannabinoids by LCQQQ	c-THC @50ng/mL, all others @10 ng/mL
P1-D6	Blood: 25_125 ngmL	isp blood cannabinoids Poky 2016-3.m	MJ-CAL5_r001.d	Calibration	5	AM 6.1.2 Cannabinoids by LCQQQ	c-THC @125ng/mL, all others @25 ng/mL
P1-D7	Blood: 50_250 ngmL	isp blood cannabinoids Poky 2016-3.m	MJ-CAL6_r001.d	Calibration	6	AM 6.1.2 Cannabinoids by LCQQQ	c-THC @250ng/mL, all others @50 ng/mL
P1-D1	Blank	isp blood cannabinoids Poky 2016-3.m		Blank			

Sample Position	Sample Name	Method	Data File	Sample Type	Level Name	Comment	Info.
			MJ-Carryover blank1_r001.d			AM 6.1.2 Cannabinoids by LCQQQ	
P1-D8	Blood Negative Control	isp blood cannabinoids Poky 2016-3.m	MJ-NC-r001.d	Sample		AM 6.1.2 Cannabinoids by LCQQQ	Negative Blood UTAK Lot B1013
P1-D9	PC1	isp blood cannabinoids Poky 2016-3.m	MJ-POS Ctrl 1-r001.d	Sample		AM 6.1.2 Cannabinoids by LCQQQ	Positive Control-UTAK B1013 + WS060716
P1-D1	Blank	isp blood cannabinoids Poky 2016-3.m	MJ-Blank 3_r001.d	Blank		AM 6.1.2 Cannabinoids by LCQQQ	
P1-E1	P2017-2273-1	isp blood cannabinoids Poky 2016-3.m	MJ P2017-2273-1.d	Sample		AM 6.1.2 Cannabinoids by LCQQQ	Blood
P1-E2	P2017-2286-1	isp blood cannabinoids Poky 2016-3.m	MJ P2017-2286-1.d	Sample		AM 6.1.2 Cannabinoids by LCQQQ	
P1-E3	P2017-2307-1	isp blood cannabinoids Poky 2016-3.m	MJ P2017-2307-1.d	Sample		AM 6.1.2 Cannabinoids by LCQQQ	Blood
P1-E4	P2017-2318-1	isp blood cannabinoids Poky 2016-3.m	MJ P2017-2318-1.d	Sample		AM 6.1.2 Cannabinoids by LCQQQ	
P1-E5	P2017-2333-1	isp blood cannabinoids Poky 2016-3.m	MJ P2017-2333-1.d	Sample		AM 6.1.2 Cannabinoids by LCQQQ	Blood
P1-E6	PC2	isp blood cannabinoids Poky 2016-3.m	MJ-POS Ctrl 2-r001.d	Sample		AM 6.1.2 Cannabinoids by LCQQQ	Positive Control-UTAK B1013 + WS060716
P1-E7	P2017-2334-1	isp blood cannabinoids Poky 2016-3.m	MJ P2017-2334-1.d	Sample		AM 6.1.2 Cannabinoids by LCQQQ	Blood
P1-E8	P2017-2384-1	isp blood cannabinoids Poky 2016-3.m	MJ P2017-2384-1.d	Sample		AM 6.1.2 Cannabinoids by LCQQQ	
P1-E9	P2017-2394-1	isp blood cannabinoids Poky 2016-3.m	MJ P2017-2394-1.d	Sample		AM 6.1.2 Cannabinoids by LCQQQ	Blood
P1-F1	P2017-2460-1	isp blood cannabinoids Poky 2016-3.m	MJ P2017-2460-1.d	Sample		AM 6.1.2 Cannabinoids by LCQQQ	
P1-D1	Blank	isp blood cannabinoids Poky 2016-3.m	MJ-Blank4-r001.d	Blank		AM 6.1.2 Cannabinoids by LCQQQ	Blood

TS

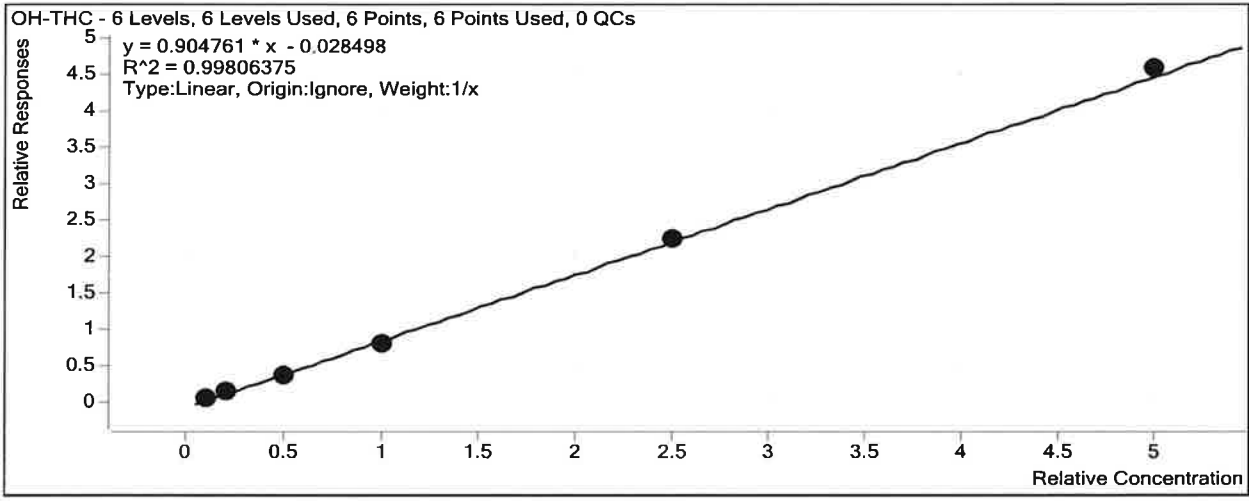
# ISP Forensics Calibration Curve Report

**Batch Data Path** C:\MassHunter\Data\2017\Combined\112217 TS\QuantResults\112017 Cann TS.batch.bin

**Last Calib Update** 11/24/2017 9:29 AM

**Analyst Name** ISP TOX

**Target Compound** OH-THC  
**Internal Standard** OH-THC-d3



Sample	Level	Enabled	Exp Conc	Final Conc	Accuracy
Blood: 1_5 ng/mL	1	<input checked="" type="checkbox"/>	1	1.2	117.8
Blood: 2_10 ng/mL	2	<input checked="" type="checkbox"/>	2	1.9	96.7
Blood: 5_25 ng/mL	3	<input checked="" type="checkbox"/>	5	4.4	88.7
Blood: 10_50 ng/mL	4	<input checked="" type="checkbox"/>	10	9.5	94.7
Blood: 25_125 ng/mL	5	<input checked="" type="checkbox"/>	25	25.0	100.1
Blood: 50_250 ng/mL	6	<input checked="" type="checkbox"/>	50	50.9	101.9

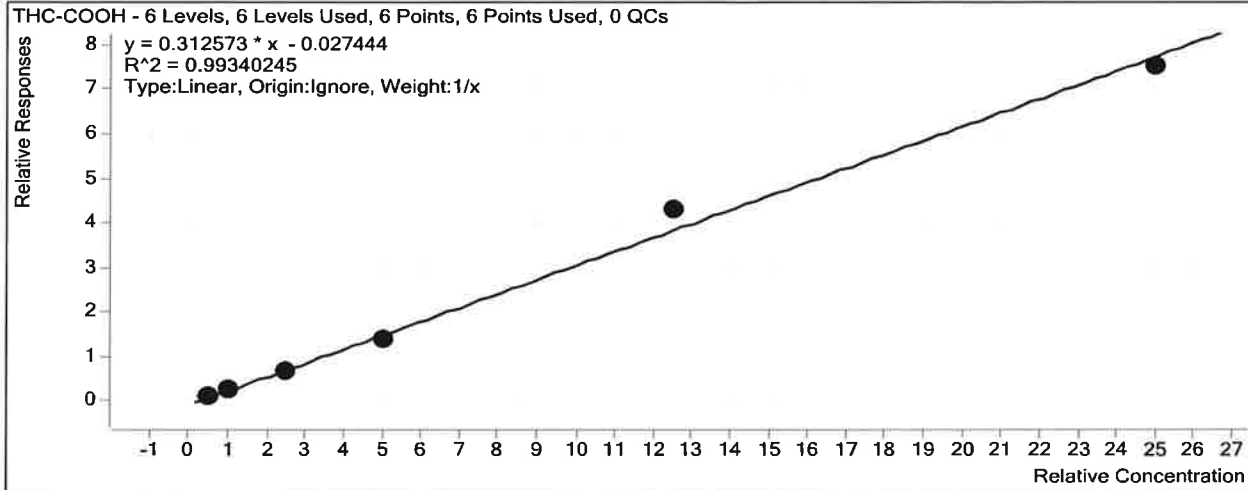
# ISP Forensics Calibration Curve Report

TS

**Batch Data Path** C:\MassHunter\Data\2017\Combined\112217 TS\QuantResults\112017 Cann TS.batch.bin

**Last Calib Update** 11/24/2017 9:29 AM **Analyst Name** ISP TOX

**Target Compound** *THC-COOH*  
**Internal Standard** *THC-COOH-d3*



Sample	Level	Enabled	Exp Conc	Final Conc	Accuracy
Blood: 1_5 ng/mL	1	<input checked="" type="checkbox"/>	5	5.4	108.0
Blood: 2_10 ng/mL	2	<input checked="" type="checkbox"/>	10	9.9	99.2
Blood: 5_25 ng/mL	3	<input checked="" type="checkbox"/>	25	23.3	93.3
Blood: 10_50 ng/mL	4	<input checked="" type="checkbox"/>	50	45.8	91.6
Blood: 25_125 ng/mL	5	<input checked="" type="checkbox"/>	125	139.3	111.4
Blood: 50_250 ng/mL	6	<input checked="" type="checkbox"/>	250	241.3	96.5

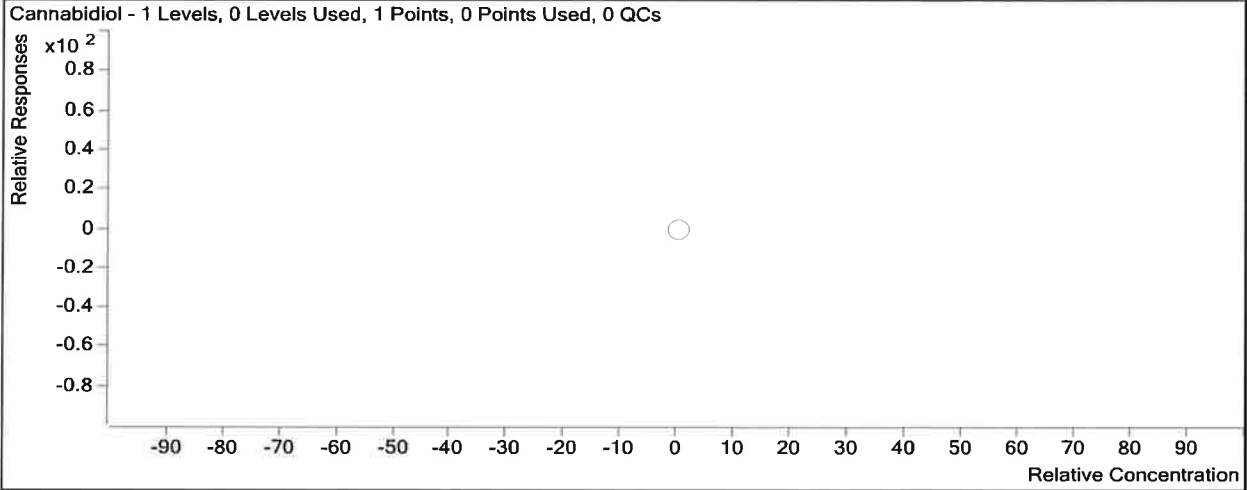
# ISP Forensics Calibration Curve Report

TS

**Batch Data Path** C:\MassHunter\Data\2017\Combined\112217 TS\QuantResults\112017 Cann TS.batch.bin

**Last Calib Update** 11/24/2017 9:29 AM      **Analyst Name** ISP TOX

**Target Compound** *Cannabidiol*      Cannabidiol not evaluated. TS  
**Internal Standard** *Cannabidiol-d3*



Sample	Level	Enabled	Exp Conc	Final Conc	Accuracy
Blood: 1_5 ng/mL	1	<input type="checkbox"/>	1	0.0	0.0
Blood: 2_10 ng/mL	2	<input checked="" type="checkbox"/>	2	0.0	0.0
Blood: 5_25 ng/mL	3	<input checked="" type="checkbox"/>	5	0.0	0.0
Blood: 10_50 ng/mL	4	<input checked="" type="checkbox"/>	10	0.0	0.0
Blood: 25_125 ng/mL	5	<input checked="" type="checkbox"/>	25	0.0	0.0
Blood: 50_250 ng/mL	6	<input checked="" type="checkbox"/>	50	0.0	0.0

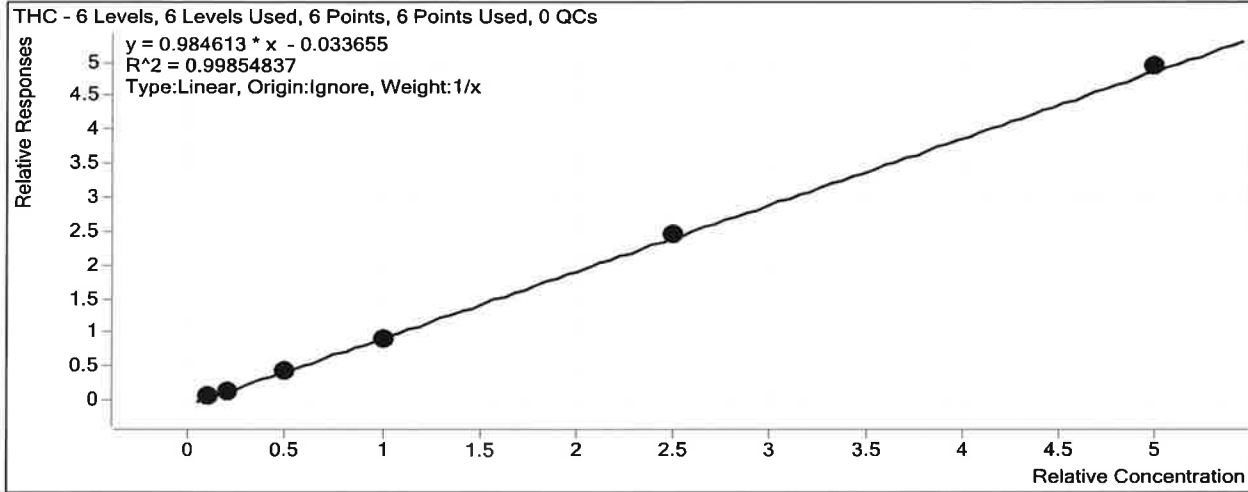
# ISP Forensics Calibration Curve Report

TS

**Batch Data Path** C:\MassHunter\Data\2017\Combined\112217 TS\QuantResults\112017 Cann TS.batch.bin

**Last Calib Update** 11/24/2017 9:29 AM      **Analyst Name** ISP TOX

**Target Compound** *THC*  
**Internal Standard** *THC-d3*



Sample	Level	Enabled	Exp Conc	Final Conc	Accuracy
Blood: 1_5 ng/mL	1	<input checked="" type="checkbox"/>	1	1.2	119.3
Blood: 2_10 ng/mL	2	<input checked="" type="checkbox"/>	2	1.8	89.7
Blood: 5_25 ng/mL	3	<input checked="" type="checkbox"/>	5	4.6	92.9
Blood: 10_50 ng/mL	4	<input checked="" type="checkbox"/>	10	9.6	96.0
Blood: 25_125 ng/mL	5	<input checked="" type="checkbox"/>	25	25.3	101.1
Blood: 50_250 ng/mL	6	<input checked="" type="checkbox"/>	50	50.5	101.0



TB

# ISP FORENSICS

## Pocatello

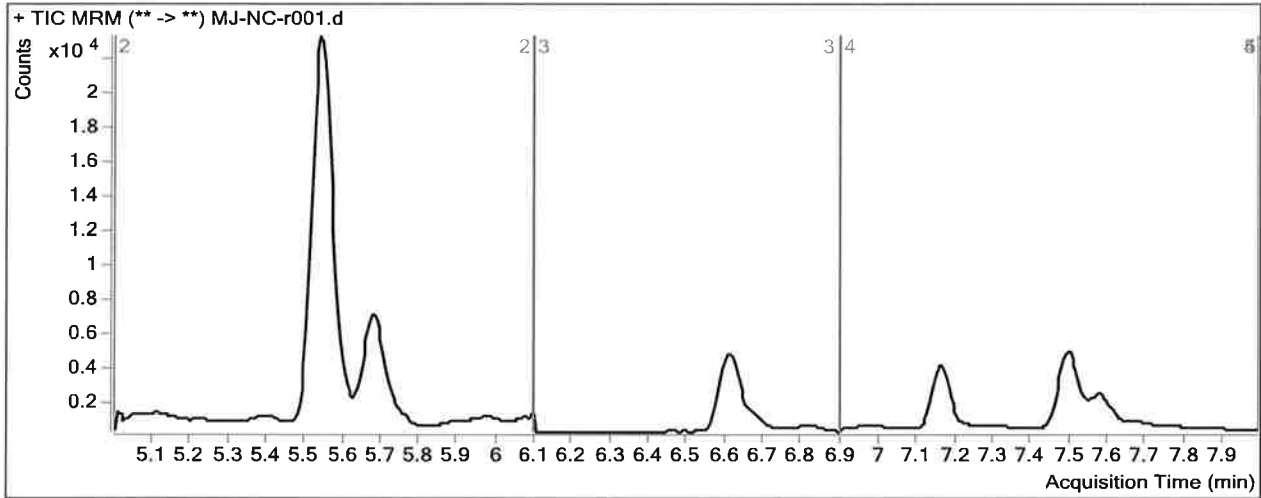
### Cannabinoid Analysis Report

**Batch Data Path** C:\MassHunter\Data\2017\Combined\112217 TS\QuantResults\112017 Cann TS.batch.bin  
**Analysis Time** 11/24/2017 9:29 AM **Analyst Name** ISPUser  
**Report Time** 11/24/2017 9:33 AM **Reporter Name** ISPUser  
**Last Calib Update** 11/24/2017 9:29 AM **Batch State** Processed

**Analysis Info**

**Acq Time** 2017-11-22 19:19 **Data File** MJ-NC-r001.d  
**Sample Type** Sample **Sample Name** Blood Negative Control  
**Dilution** 1 **Acq Method** isp blood cannabinoids Poky 2016-3.m  
**Position** P1-D8 **Sample Info** Negative Blood UFAK Lot B1013 Hemostat 361331-2 TS  
**Inj Vol** -1 **Comment** AM 6.1.2 Cannabinoids by LCQQQ

**Sample Chromatogram**



**Results**

Compound	ISTD Compound	RT	Response	ISTD Resp	Resp Ratio	Final Conc
OH-THC	OH-THC-d3	5.494	127	74920	0.0017	0.3338
THC	THC-d3	7.552	203	8019	0.0253	0.5988

TS

# ISP FORENSICS

## Pocatello

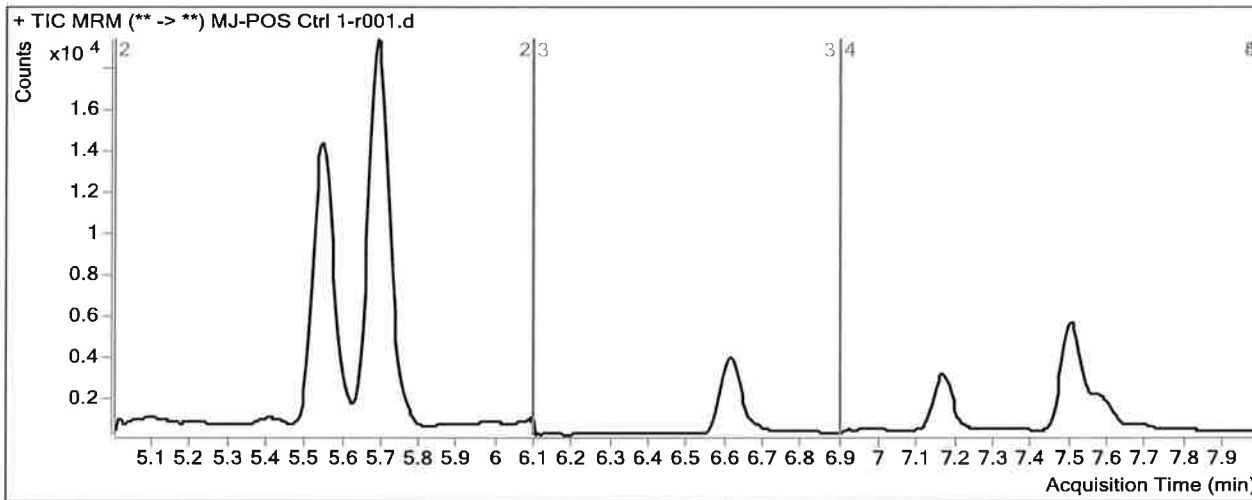
### Cannabinoid Analysis Report

**Batch Data Path** C:\MassHunter\Data\2017\Combined\112217 TS\QuantResults\112017 Cann TS.batch.bin  
**Analysis Time** 11/24/2017 9:29 AM **Analyst Name** ISPUser  
**Report Time** 11/24/2017 9:33 AM **Reporter Name** ISPUser  
**Last Calib Update** 11/24/2017 9:29 AM **Batch State** Processed

**Analysis Info**

**Acq Time** 2017-11-22 19:33 **Data File** MJ-POS Ctrl 1-r001.d  
**Sample Type** Sample **Sample Name** PC1  
**Dilution** 1 **Acq Method** isp blood cannabinoids Poky 2016-3.m  
**Position** P1-D9 **Sample Info** ~~Positive Control-UTAK B1013 + WS060716~~ Hemostat 361331-2 +  
**Inj Vol** -1 **Comment** AM 6.1.2 Cannabinoids by LCQQQ PC1 WS05092017

**Sample Chromatogram**



**Results**

Compound	ISTD Compound	RT	Response	ISTD Resp	Resp Ratio	Final Conc
OH-THC	OH-THC-d3	5.566	154	45805	0.0034	0.3521
THC-COOH	THC-COOH-d3	5.692	9330	7070	1.3196	43.0962
THC	THC-d3	7.501	3523	5644	0.6243	6.6826

TS

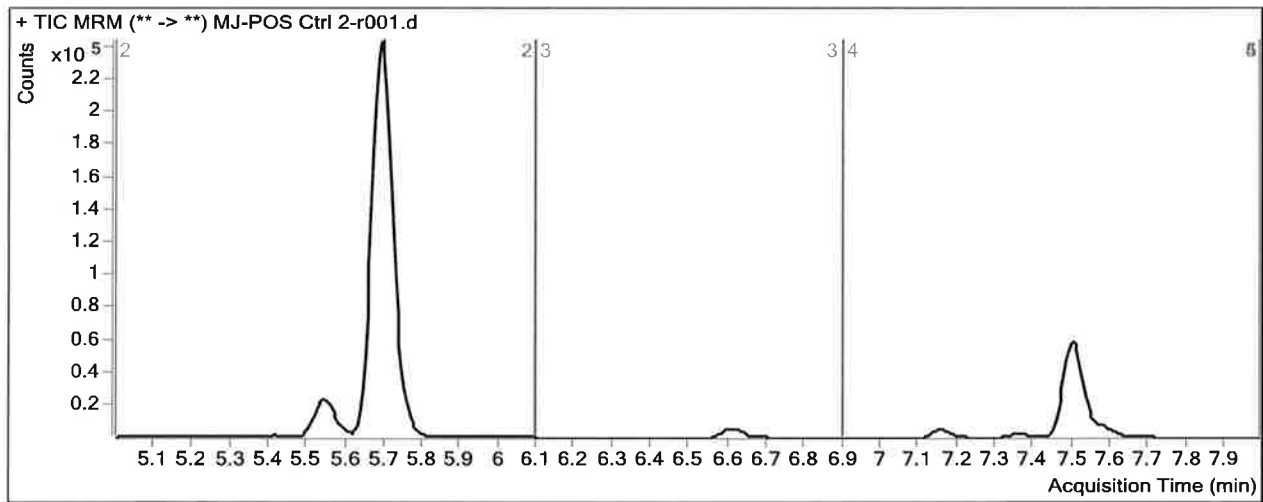
# ISP FORENSICS Pocatello Cannabinoid Analysis Report

**Batch Data Path** C:\MassHunter\Data\2017\Combined\112217 TS\QuantResults\112017 Cann TS.batch.bin  
**Analysis Time** 11/24/2017 9:29 AM **Analyst Name** ISPUser  
**Report Time** 11/24/2017 9:34 AM **Reporter Name** ISPUser  
**Last Calib Update** 11/24/2017 9:29 AM **Batch State** Processed

### Analysis Info

**Acq Time** 2017-11-22 21:06 **Data File** MJ-POS Ctrl 2-r001.d  
**Sample Type** Sample **Sample Name** PC2  
**Dilution** 1 **Acq Method** isp blood cannabinoids Poky 2016-3.m  
**Position** P1-E6 **Sample Info** ~~Positive Control-LTAK B1013 + WS060716~~ Hemostat 36133-2 + TS  
**Inj Vol** -1 **Comment** AM 6.1.2 Cannabinoids by LCQQQ PCR W# 105092017

### Sample Chromatogram



### Results

Compound	ISTD Compound	RT	Response	ISTD Resp	Resp Ratio	Final Conc
THC-COOH	THC-COOH-d3	5.692	147041	10146	14.4927	464.5369
Cannabidiol	Cannabidiol-d3	6.616	248	9218	0.0270	
THC	THC-d3	7.496	76493	10098	7.5753	77.2782